

# LanSchool

## Classroom Management Software

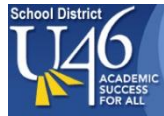
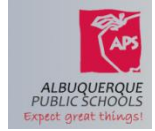


Coby Gurr  
2012

- LanSchool was founded in 1986
- 26<sup>th</sup> anniversary year
- LanSchool was the first network-based classroom management solution
- Acquired by Stoneware in 2011

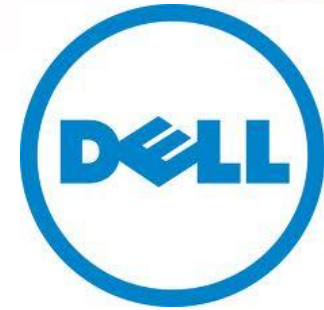


- 10,000+ customers worldwide
- 2,000,000 installed nodes
- K-12
- Higher Education
- Corporate, Government, Healthcare training



**Microsoft**<sup>®</sup>

**lenovo**<sup>™</sup>



**IBM**<sup>®</sup>



**NComputing**<sup>™</sup>



**CITRIX**<sup>®</sup>



# Classroom Management

- Student-Faculty contact
- Cooperation among students
- Active learning
- Prompt feedback
- Time on task
- Communicate high expectations
- Respects diverse talents and ways of knowing

- Teacher confidence using the technology
- Using technology to teach more effectively
- Electronic assessment
- Inappropriate behavior
- Cyber-bullying
- Digital distractions
- Focusing on the lowest performing students
- Class collaboration
- Time (increasing or decreasing class time?)
- Increasing student time on task
- Language labs
- Showing videos
- Keeping track of battery charge status
- Monitoring mobile devices
- Professional development
- 1:1 and BYOD environments

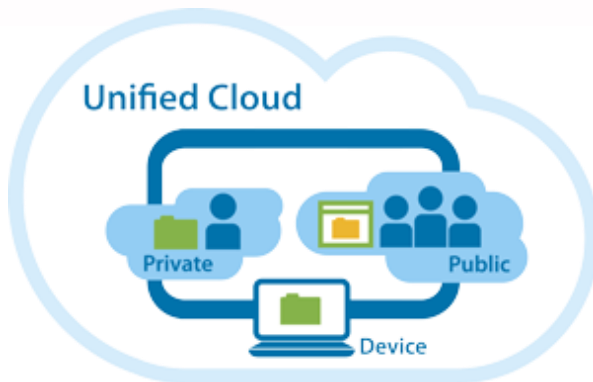
## LanSchool

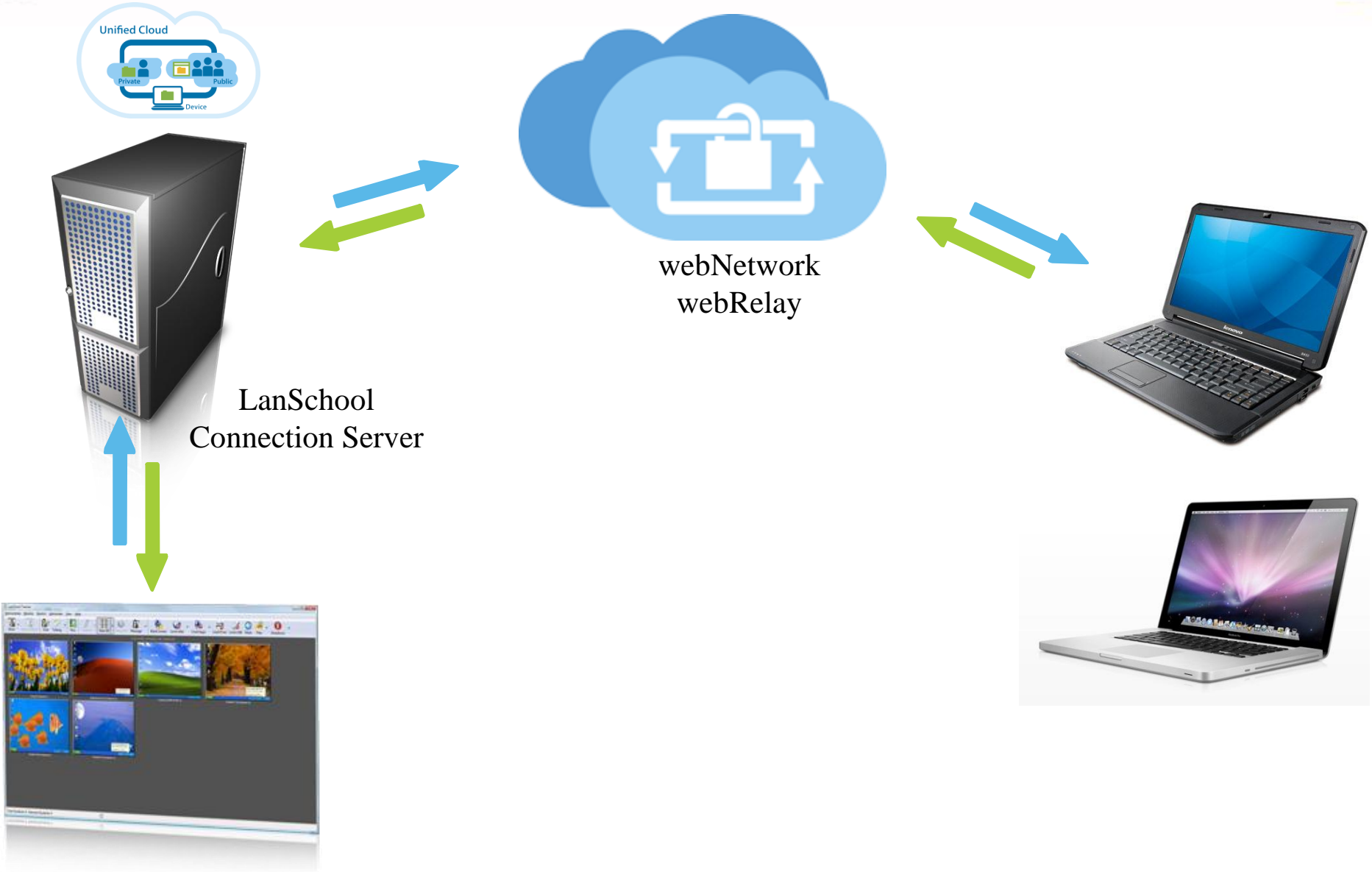
- **Saves** teachers **time** and **increases confidence**
- **Focuses the attention** of students on the teacher by removing distractions
- Enables the teacher to better **demonstrate skills**
- Allows the teacher to **monitor** classroom activity
- **Assess** student understanding in real-time
- **Prevents** cyber-bullying and inappropriate use
- **Aids** in professional development



- **LanSchool Connection Server**
  - New Client-Server Model
  - Improved support in VLAN & Wireless environments
  - LanSchool can run “Hybrid” – P2P & Client\Server
- **Classroom Management from the Cloud**
  - LanSchool On-demand, no need to install agents
- **LanSchool Distance Teaching over the Internet**
- **Expanded iOS Teacher Assistant and Student capabilities**
- **New Android Student**
- **LanSchool Tech Console “Now Included”**
  - Centralized Faronics Deep Freeze Control
  - Improved Software Install – Multiple installations at the same time







## iOS Teacher's Assistant

- Teachers Assistant can remote control Teacher computer
- Remote Control students



## iOS Student

- Receive "Show Teacher"
- Receive "Show Student"
- Receive "Draw on Screen"
- iOS LanSchool web browser
  - Limit web
  - Website tracking history

## Android Student

- Show Android student thumbnails
- Receive "show teacher" broadcast
- Receive a message
- Take a test
- Ask a question
- Respond with Vote to teacher poll
- Gather Inventory information
  - Battery Status
  - Current application running & Icon
  - Network information
- Manually Change Channel



- Quick, simple install
- Fast, reliable performance
- Show teacher's screen and audio to students
- High color thumbnail monitoring
- Blank the students' screens and show a custom message
- Limit applications
- Clear desktop button
- Limit the Internet
- Limit printing
- Limit USB and CD-ROM drives
- Muting
- Audio listen and broadcast
- Multicast video distribution and playback
- Real-time application and keystroke monitoring
- Alert on banned words
- Show student's screen to students
- Remote control a student
- View a single student
- Student testing
- Student voting
- Student questions to teacher
- Run program or website
- Show running applications, terminate app
- Ubuntu Linux Student support
- Vernier LabQuest device support
- WMS Console Plug-in for Windows Multipoint Server 2011
- Automated class list generation from SIS
- Send and Collect files
- Co-browse the Internet
- Limit private browsing on IE
- Text Chat
- Select random student
- Send a message
- Screen snapshot
- Show Internet history
- Send a message
- Draw on screen
- Shut down, restart or logoff computers from the teacher's computer
- Power on machines from the teacher's computer
- Remote login utility on Windows
- ScreenFeed
- Send/Collect Directories
- Screen Blank before login
- LanSchool quick client upgrade
- Anti-tampering controls
- Remove student from class
- Password secure mode
- Active Directory secure mode
- Security status monitoring
- Support for 1:1 schools
- Thin client support
- Dual monitor support
- User and Installation documentation (install.pdf, users.pdf)

- LanSchool is...
  - Simpler to install, use and maintain
  - Built on a reliable architecture
  - Supports multiple operating systems
  - More efficient using network and computing resources
  - Security hardened to prevent disruptions by students
  - Better supported
  - Best value on the market
  - The only solution to work well in a BYOD environment

# Competitive Advantages

- 2012 eSchoolNews Reader's Choice
- 2011 Technology & Learning Award of Excellence
- 2011 CODiE Finalist
- 2009 Technology & Learning Award of Excellence
- 2009 Best in Tech Scholastic Administrator
- 2008 CODiE Finalist
- 2007 Technology & Learning Award of Excellence





- Supported Environments

- Any combination of computers running Windows 98, Windows 2000, Windows XP-32, Windows Vista-32/64, Windows 7-32/64, Windows 2003 and 2008 Server
- Mac OS 10.4+
- The only exception is the LanSchool teacher console for the Mac, which will only run on Intel-based Mac hardware running OS 10.5 or higher
- Microsoft MultiPoint Server (2010 and 2011)
- Microsoft Terminal Server (2003 and 2008)
- Ubuntu 10, 11
- NComputing U, X, L and M series
- iPad, iPod, iPhone (iOS3, iOS4 and iOS5)
- Citrix Ready (XenServer and XenDesktop)
- Vernier LabQuest
- Nova5000 tablet
- Minimum RAM
  - 48 MB for Windows 98
  - 96 MB for Windows 2000
  - 128 MB for Windows XP
  - 256 MB for Windows Vista
  - 512 for Mac OSX
- TCP/IP based network (Multicast is supported)
- 802.11 wireless networks are supported



- LanSchool uses significantly less bandwidth than the competition
- LanSchool traffic does not increase significantly with more computers, where most competitors increase by the same amount of data for each additional computer
- Because LanSchool uses less network bandwidth, the wireless performance is significantly better

Product	Total Data Sent in	Average Network Load KB per second	Traffic compared to
LanSchool	2.2	21	1x
Smart Sync	38	109	17x
NetSupport	27	106	12x
NetOp	15	140	7x
Sanako	34	121	15x
AB Tutor	14	151	6x

- LanSchool includes
  - 3 years of free telephone and e-mail support
  - 3 years of upgrade protection
- Unique North American support policy
  - If we cannot fix an issue over the phone or Internet we'll fly an engineer onsite at our expense to resolve the issue
- Technical Support
  - [support@stone-ware.com](mailto:support@stone-ware.com)
  - 1-877-394-0443 (toll free)
  - 1-260-492-2357 (International)

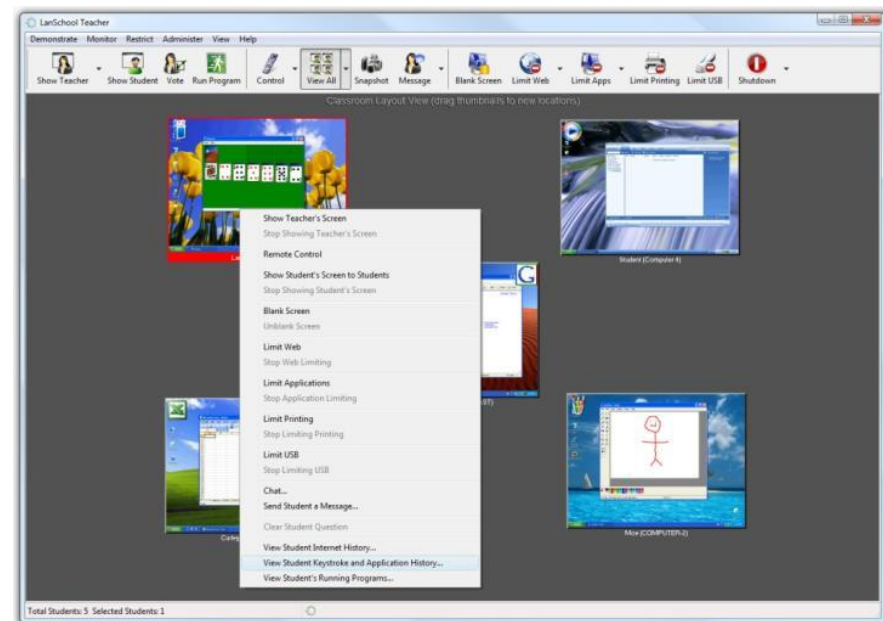
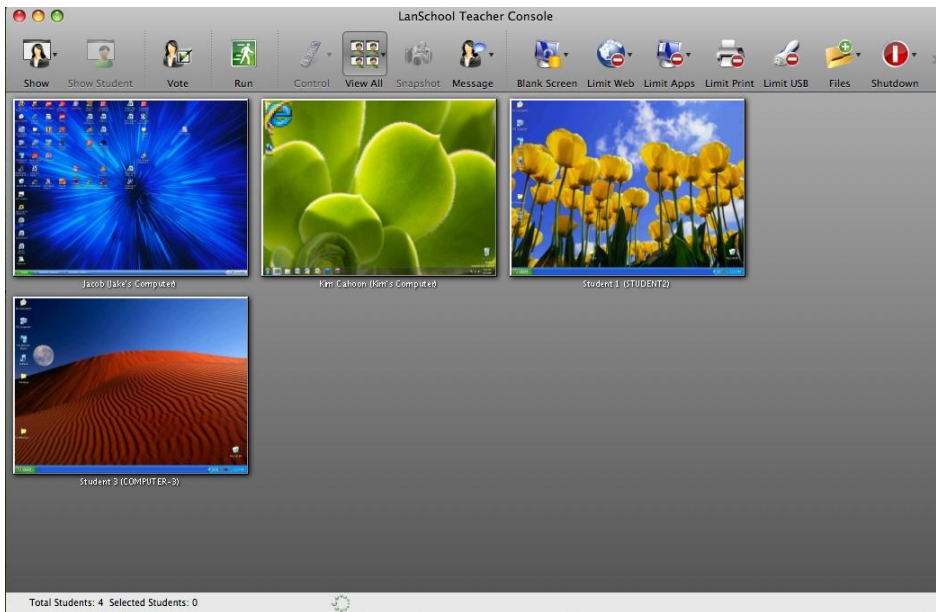
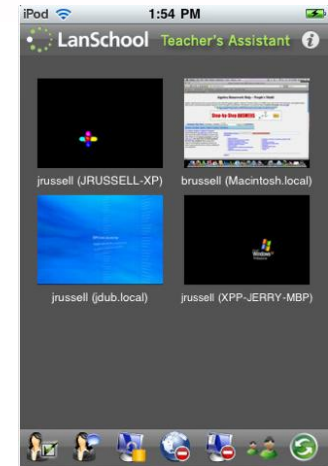
- Students continuously attempt to disrupt or disable the software
  - Reboot their computers
  - Uninstall the software
  - Stop the service
  - End the process
  - Change firewall settings
  - Delete files
  - Unplug their computer
  - Install rogue consoles
  - Changing file attributes
  - Deleting registry keys
- While some of these may seem trivial, they have all been reported by actual schools
- If the teacher can't use the software because the students have disabled it, it frustrates the teacher and negates the benefits of the software
- LanSchool virtually eliminates these problems

# Anti-tampering Features

	<b>LanSchool</b>	<b>Competition</b>
MSI Uninstall	LanSchool removes the cached MSI installer from c:\windows\installer	All competitors that use MSI leave the cached MSI file in c:\windows\installer. The students can simply uninstall the product.
Power Off	As soon as the computer reboots it will rejoin the LanSchool session	The student that reboots their computer will not automatically rejoin the session
Add/Remove Programs	LanSchool requires the installation program to uninstall – it cannot be uninstalled through add/remove programs.	Can be uninstalled through Add/Remove programs.
Service termination	Service cannot be stopped	Student service can be stopped through the control panel or console prompt
Task manager – end process	LanSchool service can be ended, but it quickly restarts	Task can be ended
Firewall	Firewall settings cannot be modified when using LanSchool	Changing the Windows firewall stops the competition and keeps all students from participating
Cable unplug	No disruption to other students, as soon as the cable is plugged in their rejoin the session in under 10 seconds	Causes all student screens to hang for 30 seconds When plugged back in they are not part of the session
NTFS File Security	Students cannot change the NTFS file security settings on LanSchool files.	Students can change the NTFS file permissions and delete the program files.
File Deletion	Students cannot delete or rename LanSchool files or registry keys	Students can easily delete or rename files or registry keys
Rogue Teachers	LanSchool includes a robust security monitoring tool to watch for rogue consoles	Rogue teacher computers cannot be identified

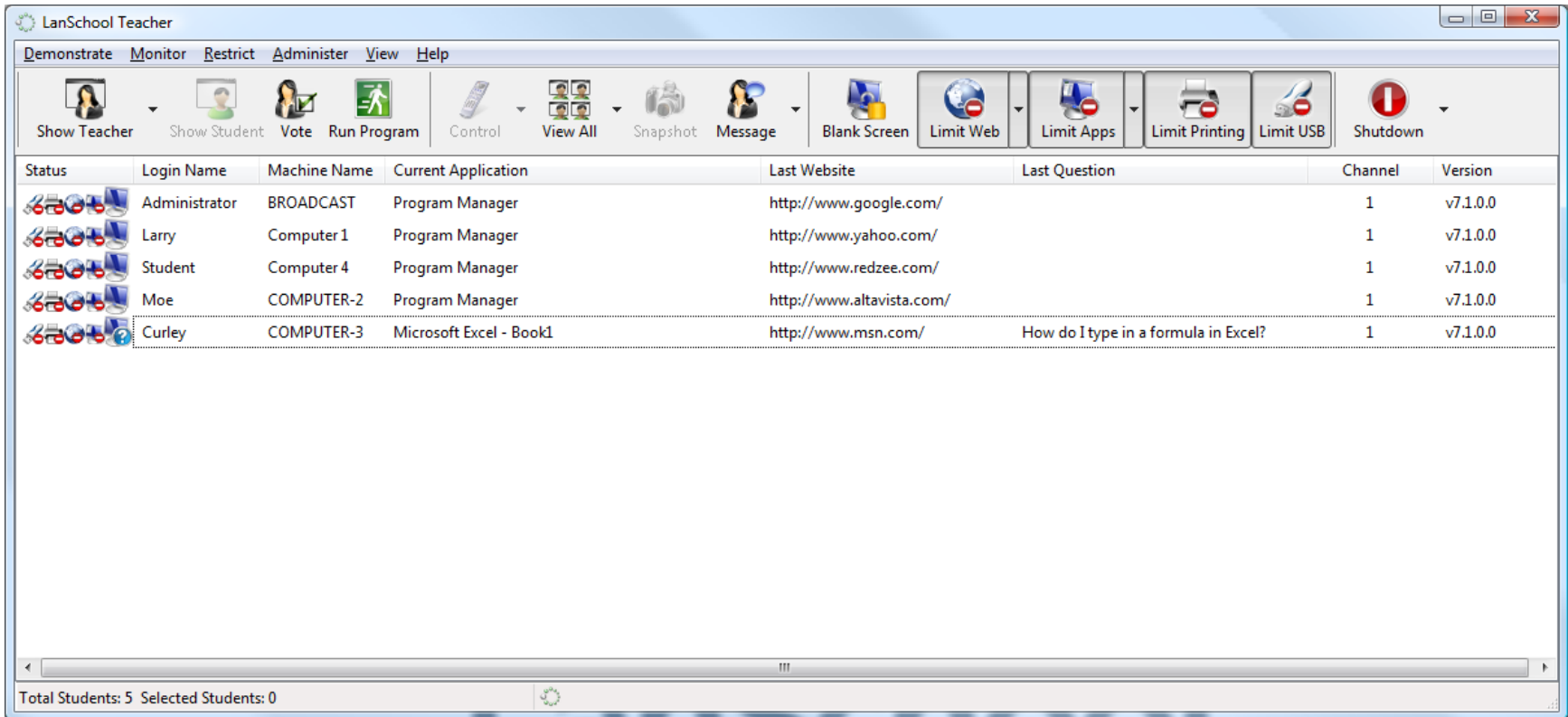
# LanSchool Feature Descriptions

- Available on both Mac OS 10, Windows and Terminal Services
- Teacher's assistant available on the iPod, iPad, iPhone
- Easily access the console through the system tray shortcut menu
- Manage students in a list view or by thumbnails
- Monitor up to 3000 students
- Arrange thumbnails to represent the classroom
- Manage all or just the selected computers
- Access functionality from menus, buttons or right mouse click
- Move, add or delete buttons from the toolbar





- You can sort on any column, except the status column
- Status icons change when App, Web, Print, Drive limiting and Muting are active
- You can view the current application and current website
- A question mark indicates a student has requested help. The student question is in the Last Question column
- F5 or command-r refreshes the view



The screenshot shows the LanSchool Teacher interface. At the top, there is a menu bar with options: Demonstrate, Monitor, Restrict, Administer, View, and Help. Below the menu is a toolbar with various icons for actions like Show Teacher, Show Student, Vote, Run Program, Control, View All, Snapshot, Message, Blank Screen, Limit Web, Limit Apps, Limit Printing, Limit USB, and Shutdown.

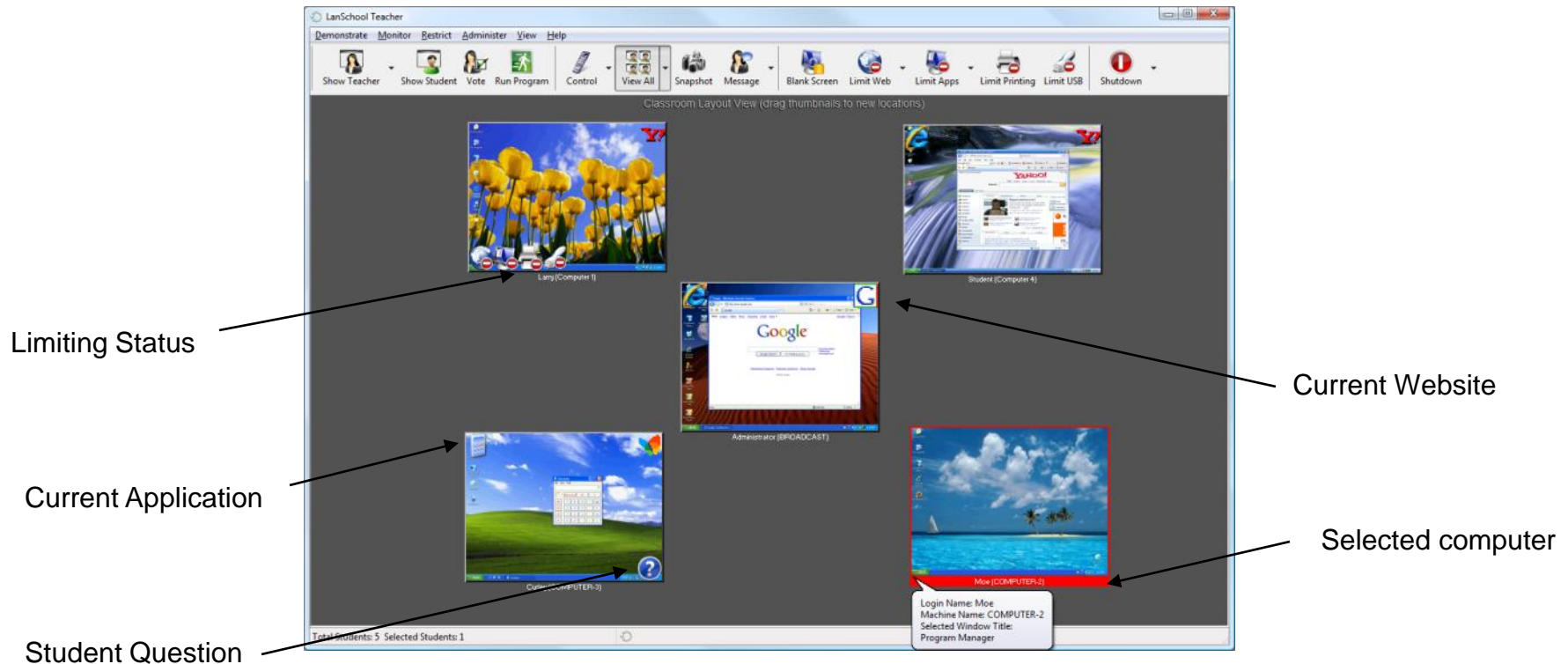
The main area displays a table with the following columns: Status, Login Name, Machine Name, Current Application, Last Website, Last Question, Channel, and Version. The table contains five rows of student data:

Status	Login Name	Machine Name	Current Application	Last Website	Last Question	Channel	Version
	Administrator	BROADCAST	Program Manager	<a href="http://www.google.com/">http://www.google.com/</a>		1	v7.1.0.0
	Larry	Computer 1	Program Manager	<a href="http://www.yahoo.com/">http://www.yahoo.com/</a>		1	v7.1.0.0
	Student	Computer 4	Program Manager	<a href="http://www.redzee.com/">http://www.redzee.com/</a>		1	v7.1.0.0
	Moe	COMPUTER-2	Program Manager	<a href="http://www.altavista.com/">http://www.altavista.com/</a>		1	v7.1.0.0
	Curley	COMPUTER-3	Microsoft Excel - Book1	<a href="http://www.msn.com/">http://www.msn.com/</a>	How do I type in a formula in Excel?	1	v7.1.0.0

At the bottom of the window, there is a status bar that reads "Total Students: 5 Selected Students: 0" and a refresh icon.

# Thumbnail View

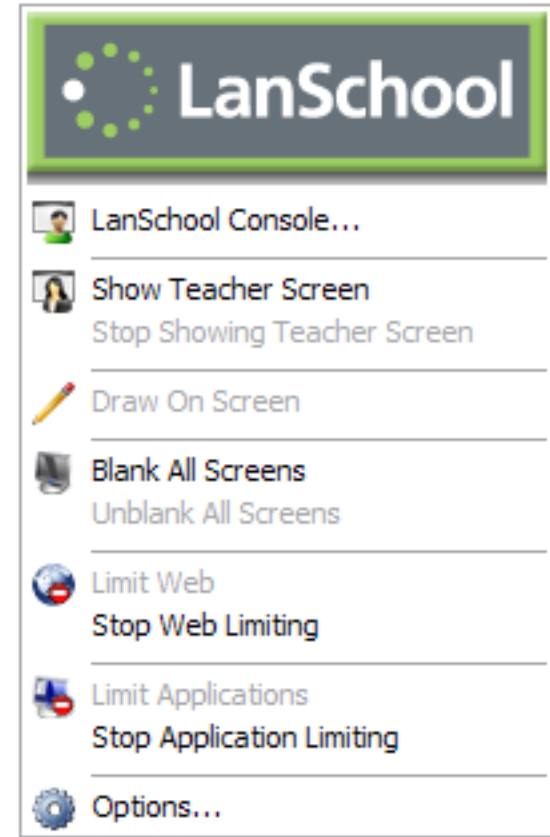
- View up to 3000 crisp high color thumbnails in classroom layout
- Thumbnails “magnify” when you hover over them
- Thumbnails show the active application, website, question and web/app/print/usb limiting status
- 4 sizes of thumbnails: small, medium, large, extra large
- Best fit automatically chooses the best size
- Selected mode only shows selected thumbnails
- Thumbnails optionally snap-to-grid
- Layouts can be saved and loaded for different classes



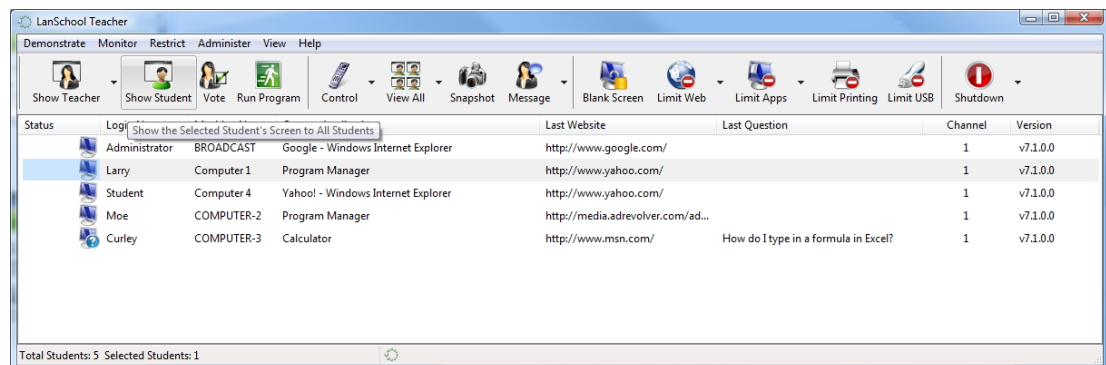
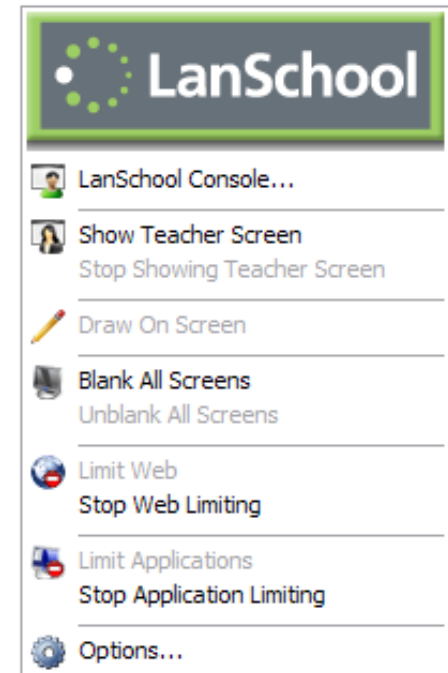
- Shows a full screen thumbnail of the student's computer
- Rotates through all of the students
- Displays the computer and login name
- Best view for monitoring at a distance



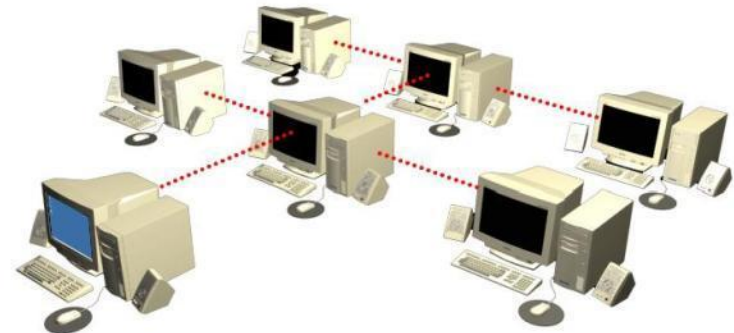
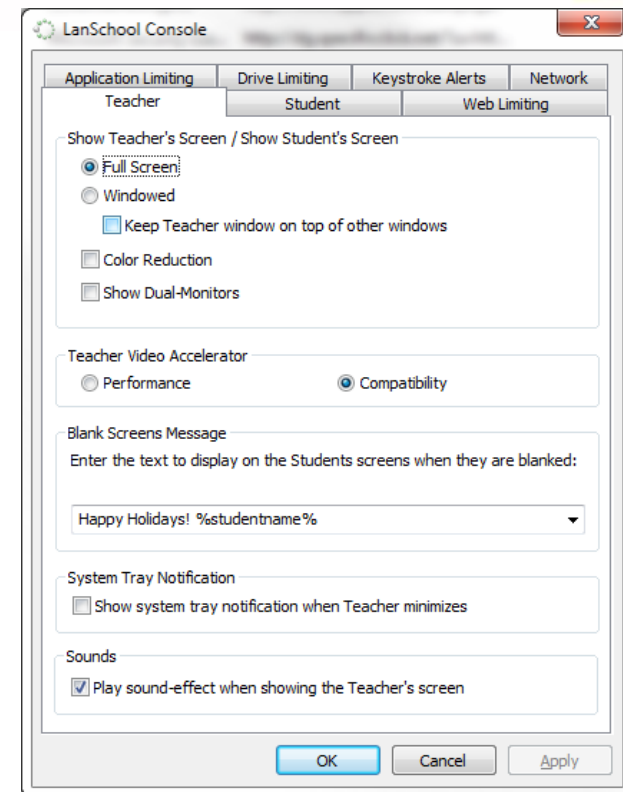
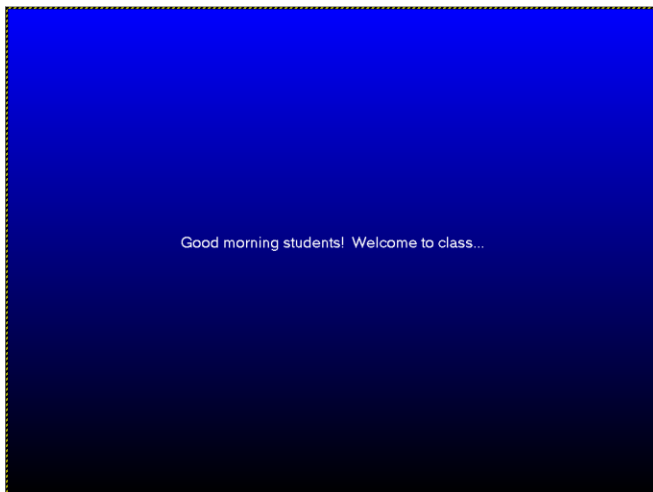
- Access key features within one mouse click
- The menu auto hides
- Left click brings up the console
- Right click brings up the system tray menu
- Access configuration options



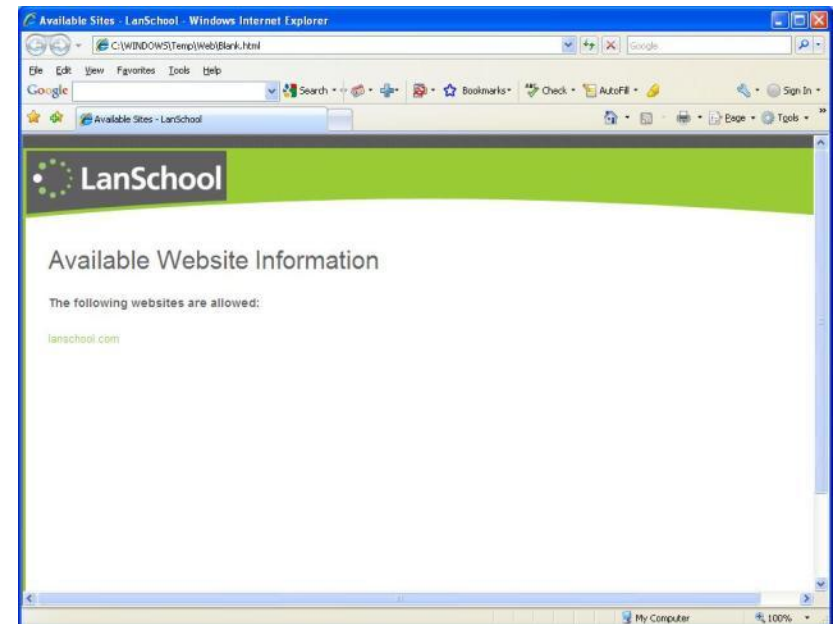
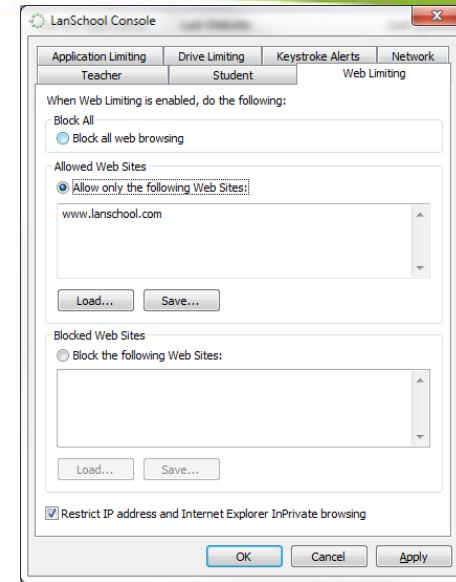
- Show the Teacher's screen to students
  - Accessed through a system tray icon or the LanSchool Console
  - Displays the teacher's screen on all or just the selected student monitors
  - Teacher can broadcast audio to students
  - Teacher can draw on the screen while broadcasting
  - While broadcasting...
    - Student screens can be "Windowed" allowing the students to continue to work
    - "Full-Screen" which takes up the student's entire screen and disables their keyboard/mouse
  
- Show a student's screen to students
  - Shows a selected student screen to the rest of the class
  - Fosters collaboration



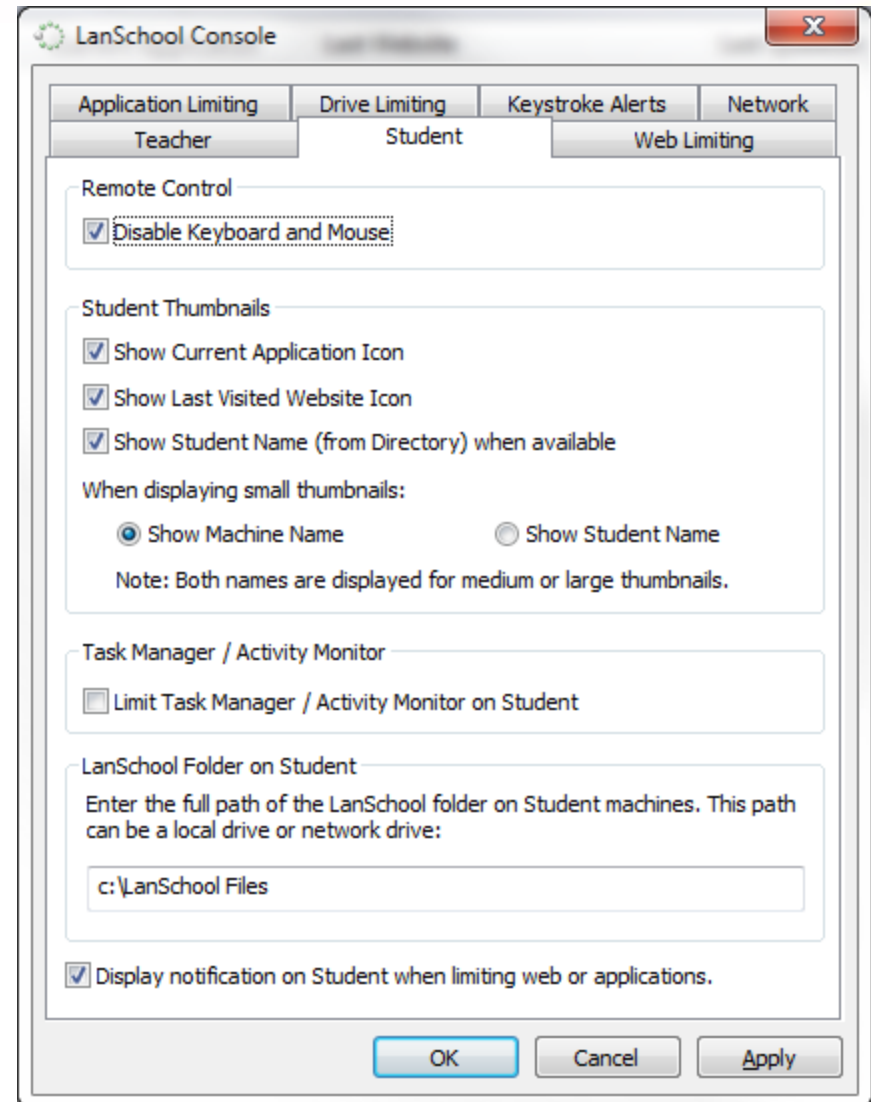
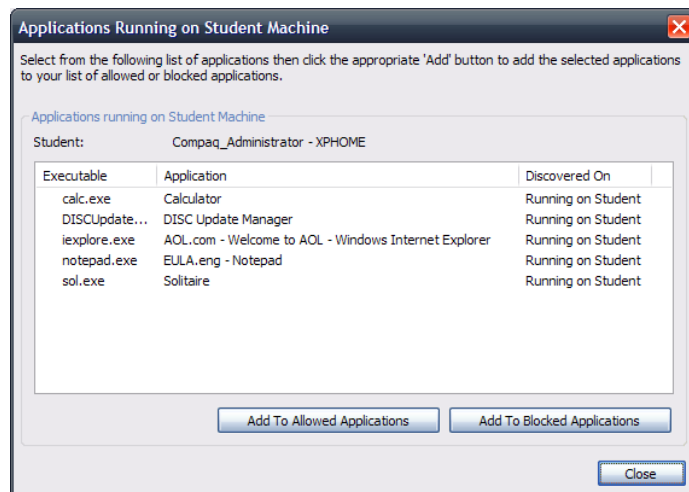
- Blank Screens
  - Shows a blue screen to all or just the selected students
  - Blocks out their keyboard and mouse
  - Last 10 custom messages are saved
  - %studentname%, %loginname% and %machinename% can be used to personalize messages
  - Blank screen messages can be accessed from the button bar
  - Screens can be blanked before login



- Block all student web browsing
- Allow certain websites on IE, Firefox and Chrome
  - “\*” and “?” wildcards are allowed
  - Safari only on the Mac
- Block certain websites on IE, Firefox and Chrome
  - “\*” and “?” wildcards are allowed
  - Safari only on the Mac
- Save and Load lists of websites
- Optionally display a list of websites that can be visited
- Limit IP address (dotted decimal) browsing by students
- Limit InPrivate browsing on IE

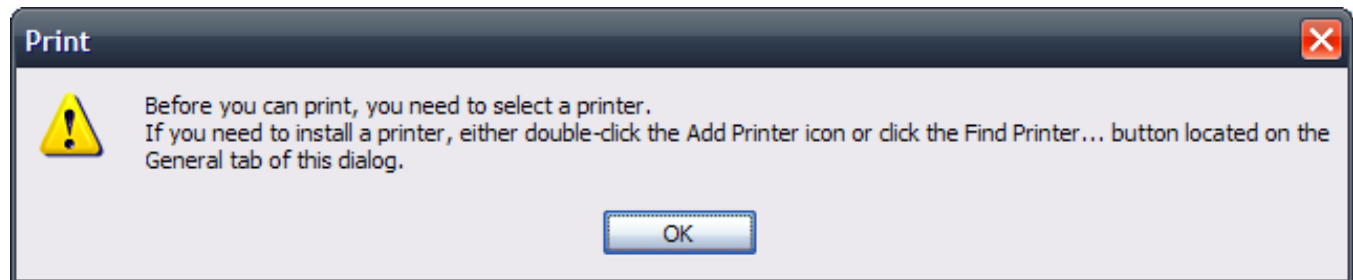


- Limit the applications that students can run
- Allow certain applications
- Block certain applications
- Save or load application lists
- Choose running applications on student machines or browse to applications on the teacher's machine
- Allow or disable task manager or activity monitor
- Cannot be thwarted by renaming applications





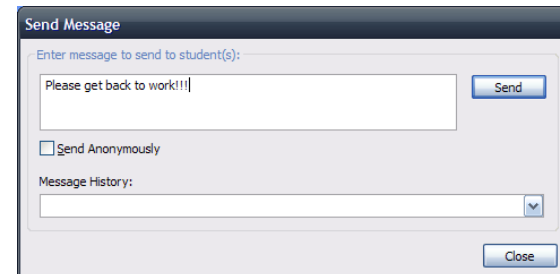
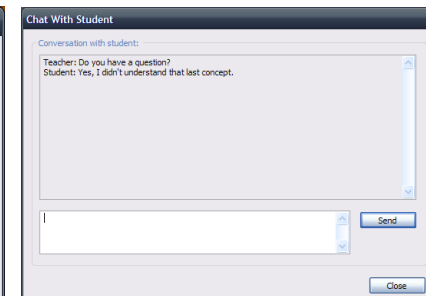
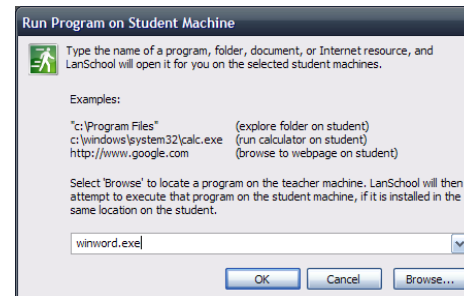
- Limits printing on one, selected or all computers
- Prevents the students from accessing the local or network printers
- Muting turns off or on the student speakers



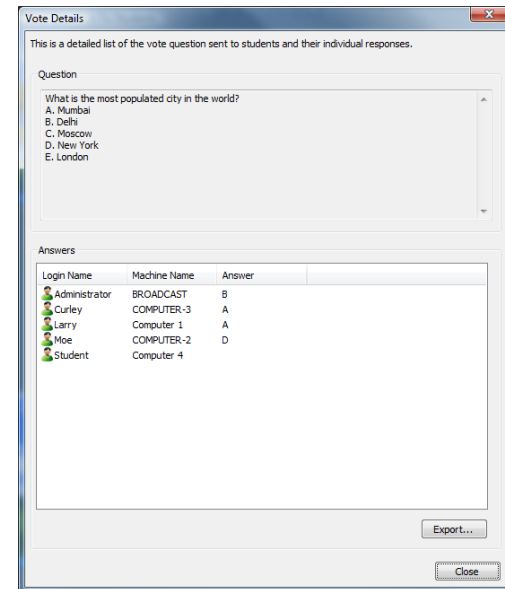
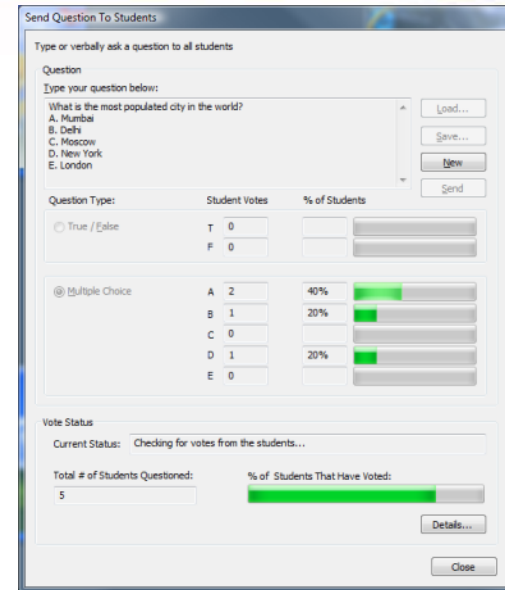
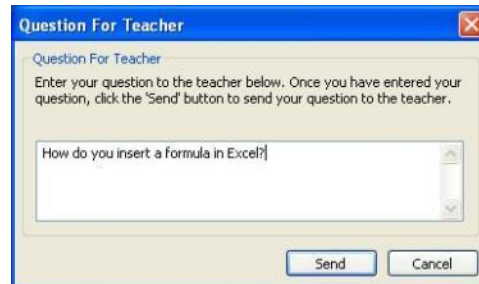
- Limit USB and CD-ROM drives
  - Stops all USB and CD-ROM drives on-the-fly
  - Closes any open applications or files
  - Will not interrupt other USB devices



- Remote Help
  - Remote control is the ability to see the student's screen and take control of their keyboard and mouse
  - You can optionally disable the student's keyboard and mouse
  - While remote controlling you can...
    - Show the student screen
    - Capture a screen shot
    - Send a message
    - Send ctrl-alt-del key sequence
  - It is possible to control multiple computers at the same time
  - Send text allows the teacher to send a text message to all or a selected student
  - Text chat with individual students
  - Run program runs a specified software application or website on all or the selected students

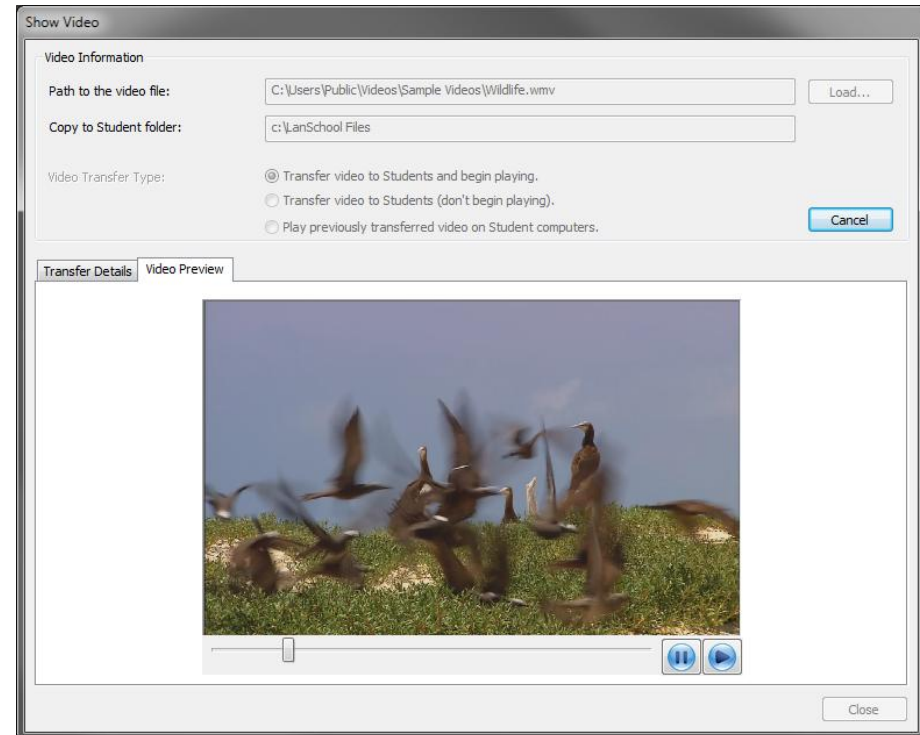


- Teachers can quickly assess student understanding
  - Ask verbal or text-based Yes/No and multiple choice.
  - See percentage and student answers
  - See results in real-time
  - Export results to a .csv
- Similar functionality to classroom “clickers”
- Students can ask for help by clicking on the LanSchool icon

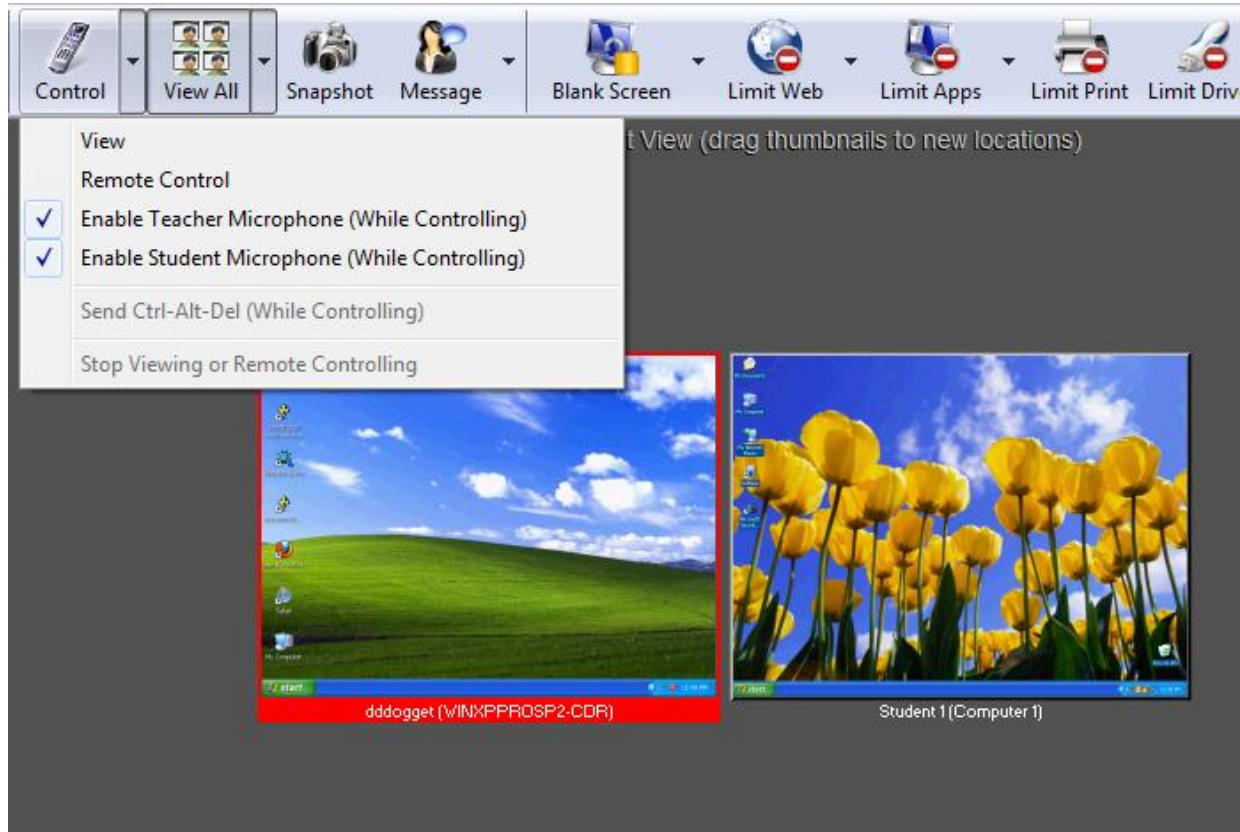




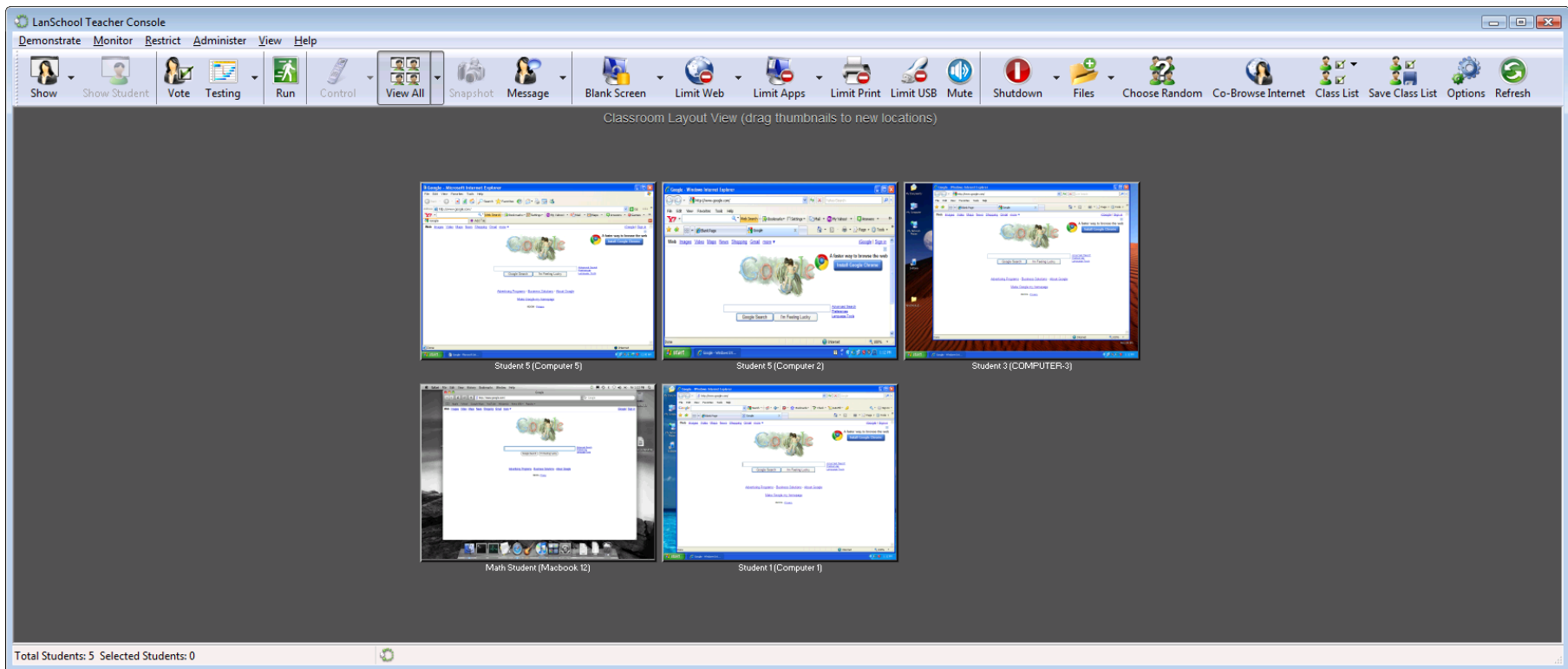
- Efficiently distribute video files to student machines
  - Sends a file over the network one time instead of “n” times
- Pause, Skip, Play video files on student machines
- Supports Media Player and Quicktime



- Listen to a student's microphone during a remote control session
- Broadcast the teacher's voice to student during a remote control or Show teacher session

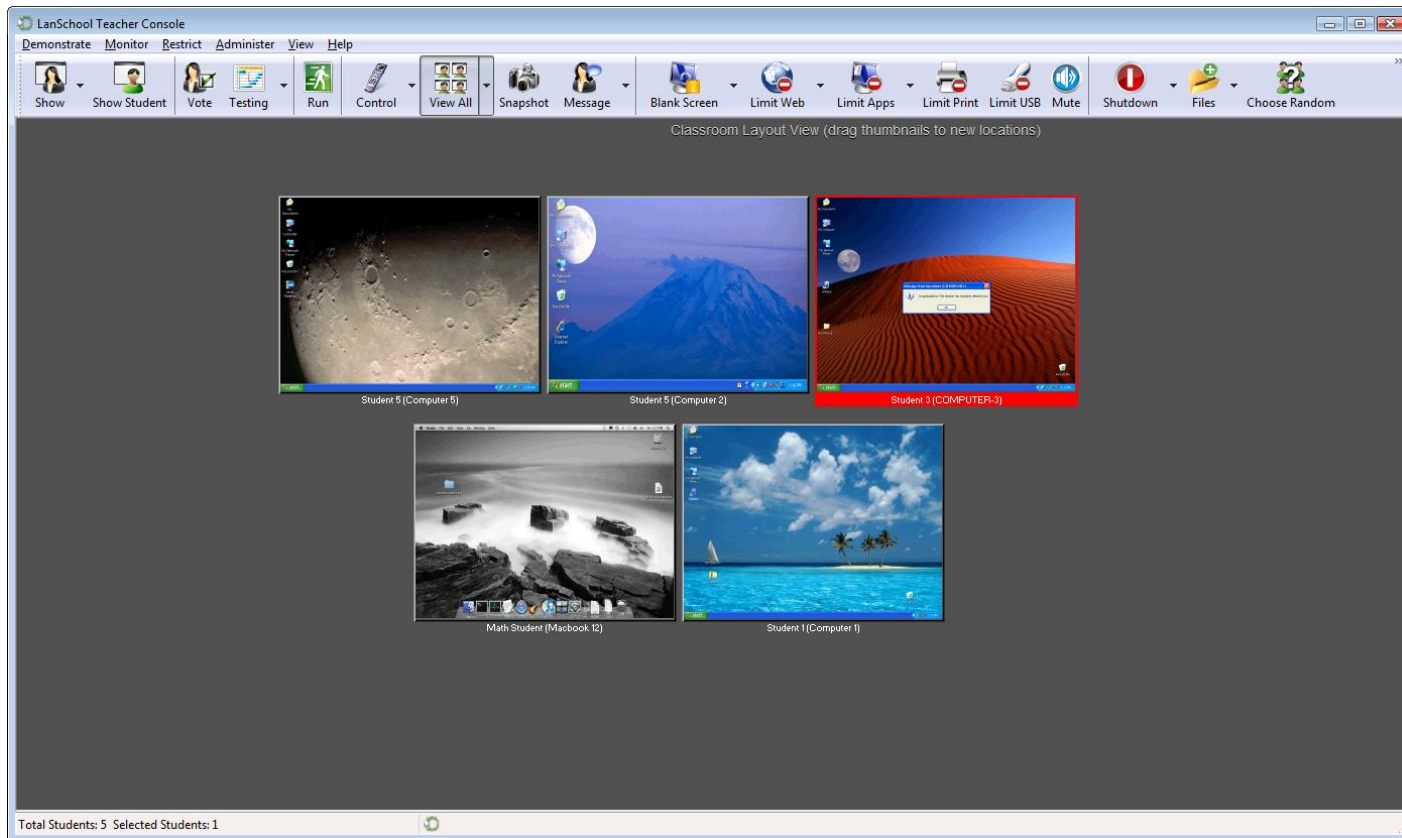


- Internet Explorer on the student's computer will follow the Teacher's Internet Explorer
- Safari on the Mac student's computer will follow the Teacher on Safari





- LanSchool notifies a student that they've been randomly selected to answer a question.



- View applications that are running on a remote computer
  - They can be added to the Allowed or Blocked lists
  - This information is visible in the details and thumbnail view
  - Applications can be terminated immediately
- Show a log of the Internet sites the student visited
  - LanSchool prevents the student from deleting the Internet History

Applications Running on Student Machine

Select from the following list of applications then click the appropriate 'Add' button to add the selected applications to your list of allowed or blocked applications.

Applications running on Student Machine

Student: Student 1 - Computer 1

Executable	Application	Discovered On
calc.exe	Calculator	Running on Student
iexplore.exe	Windows Internet Explorer	Running on Student
mspaint.exe	untitled - Paint	Running on Student
notepad.exe	Untitled - Notepad	Running on Student

Internet History

Find:

URL History

User Name: Student 1  
Computer Name: Computer 1

Title: iexplore.exe  
URL: www.google.com  
Accessed: 2010/08/11 21:48:04.594

Title: iexplore.exe  
URL: www.cnn.com  
Accessed: 2010/08/11 21:39:54.529

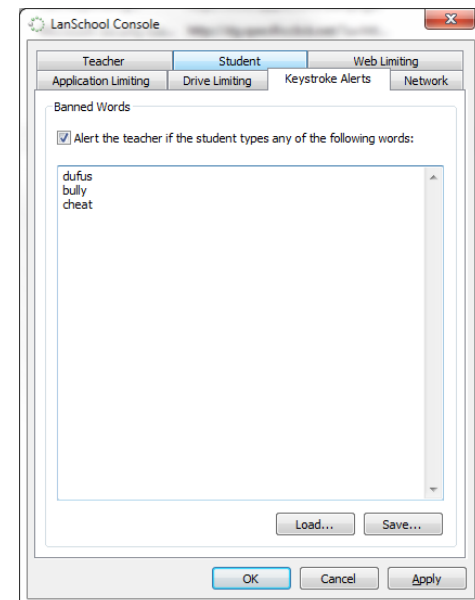
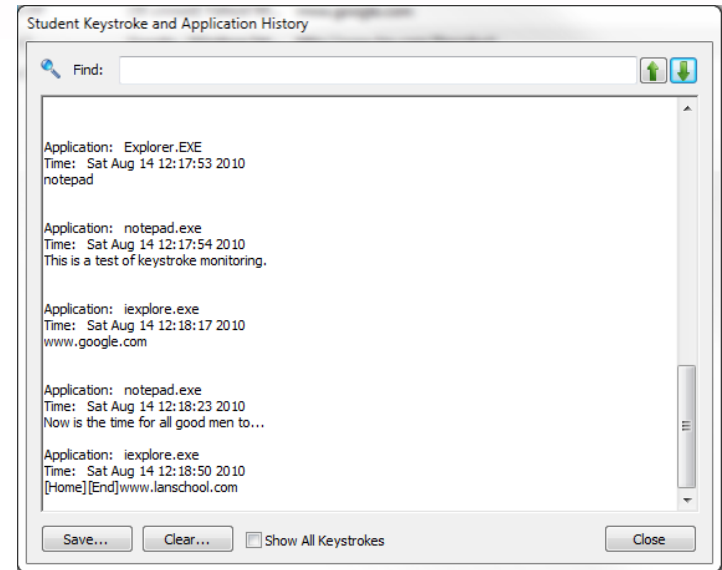
Title: iexplore.exe  
URL: www.facebook.com  
Accessed: 2010/08/11 21:39:53.448

Title: iexplore.exe  
URL: www.cnn.com  
Accessed: 2010/08/11 21:39:39.878

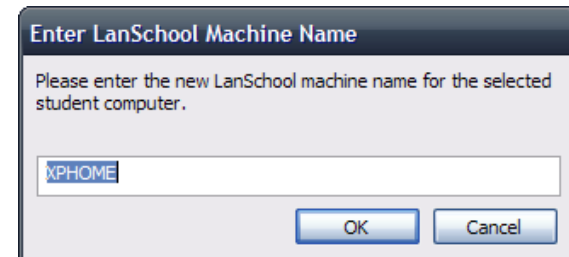
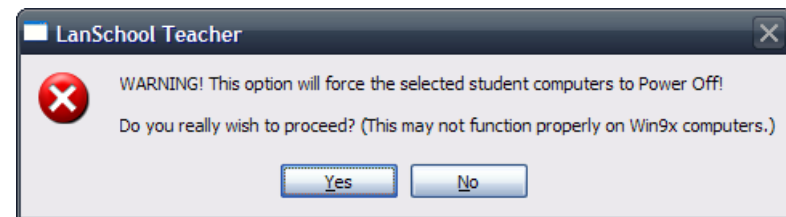
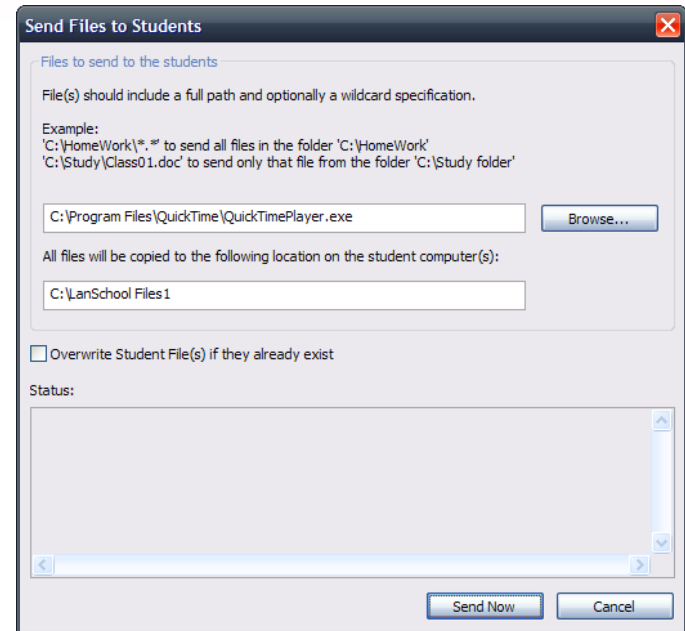
Title: iexplore.exe  
URL: www.lanschool.com  
Accessed: 2010/08/10 21:38:57.024

Title: iexplore.exe

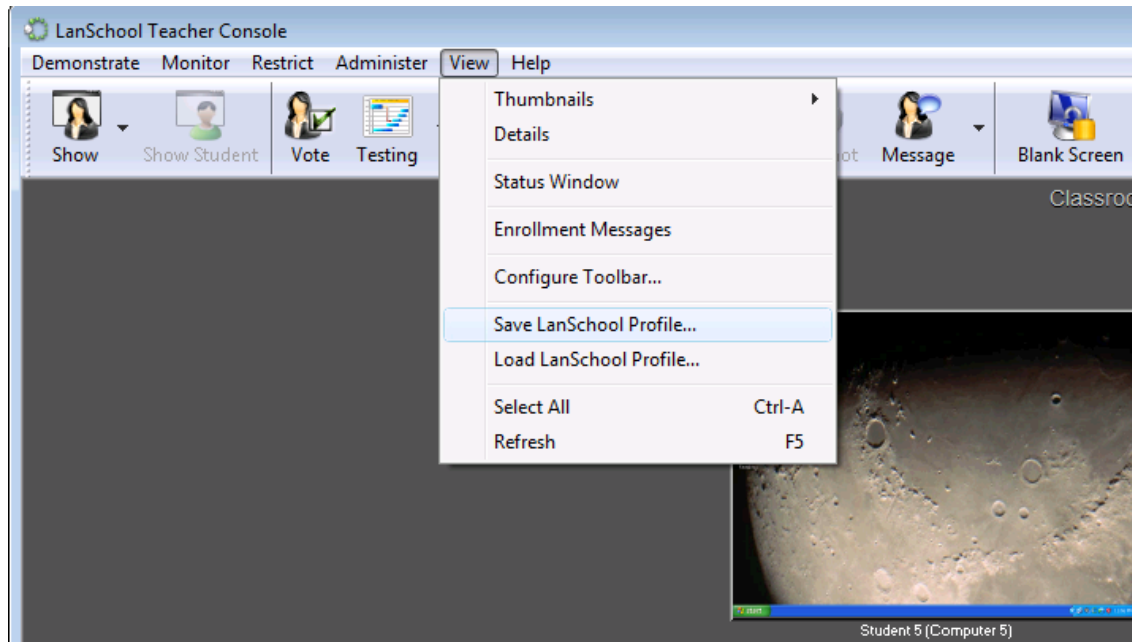
- Application and Keystroke Monitoring
  - Student keystrokes and applications are logged and can be watched real-time
  - Time, date, computer, username, keystrokes and applications can be displayed and saved
  - Rolling log of about 300 pages of typed text
  - Windows and Mac OS passwords are not captured
  - History data is encrypted at the student machine
  - Teachers can be alerted to list of banned words



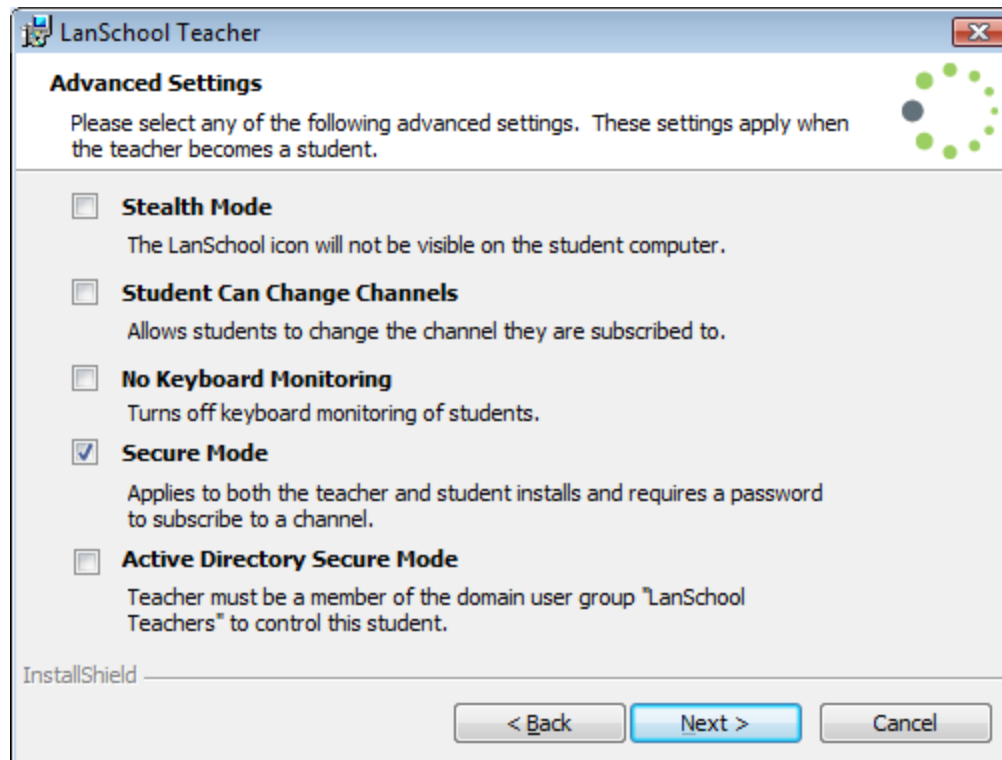
- Administrative Features
  - Send/Collect files from the teacher to students and vice versa
  - Wake up student computers
  - Logoff, Restart or Power off student computers
  - Remotely login Windows computers
  - Change student channel allows the administrator to change the student channel remotely
  - Remove student from class
    - Temporarily disables the LanSchool client software
  - Change Display Name
    - Changes the display name of the computer in the console
  - LanSchool client upgrade makes updating the LanSchool student software incredibly easy
  - Become a student machine allows a teacher machine to temporarily become a student.



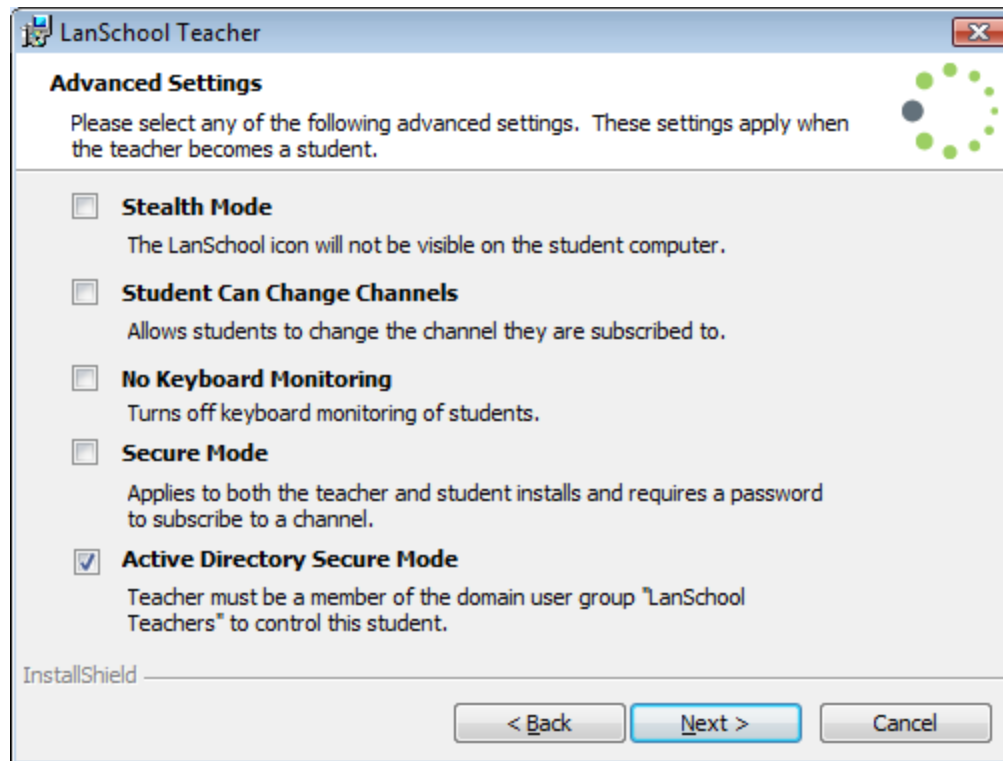
- Teachers can save and load LanSchool settings profiles
  - Can be attached to and loaded with a class list
  - Saves time when starting different classes



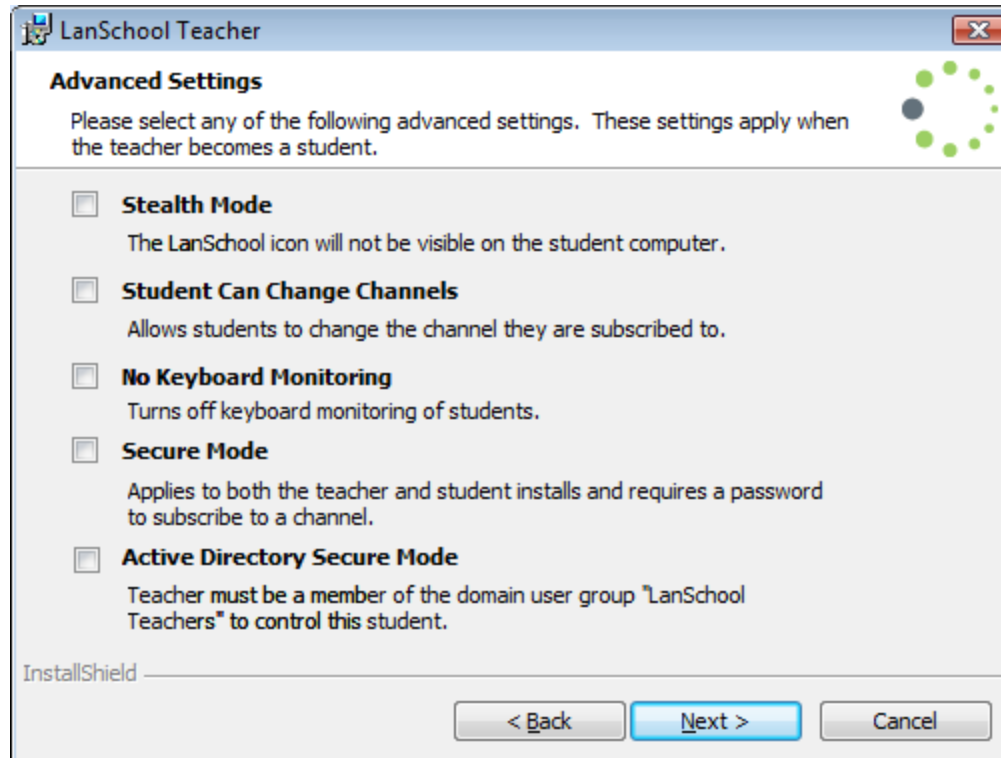
- LanSchool can be configured to require a password on the teacher's console
- Teacher's must know the LanSchool password for student computers they want to manage.



- LanSchool can be configured to require the teachers to belong to a domain group to control student computers

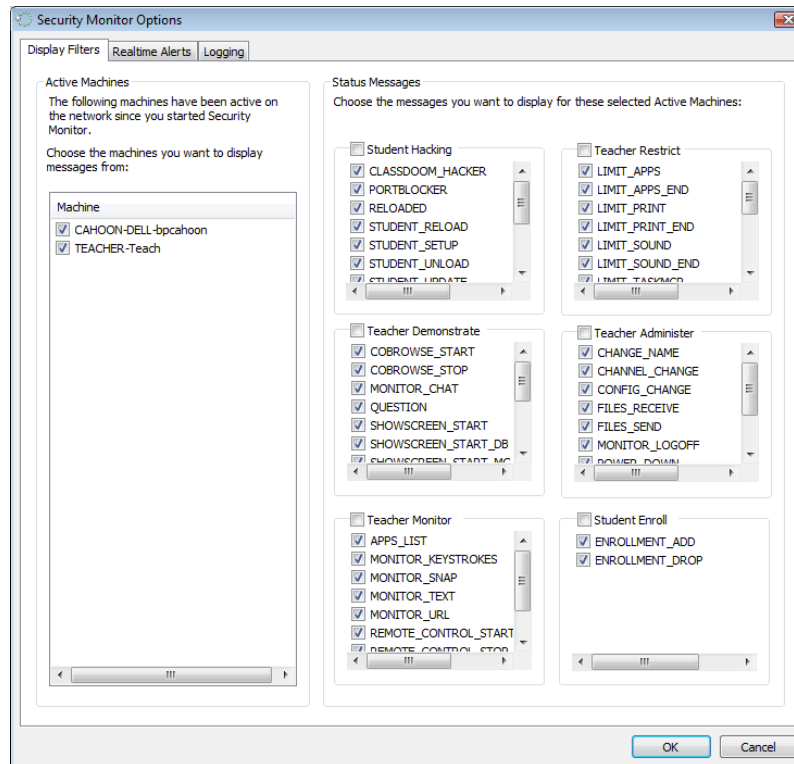


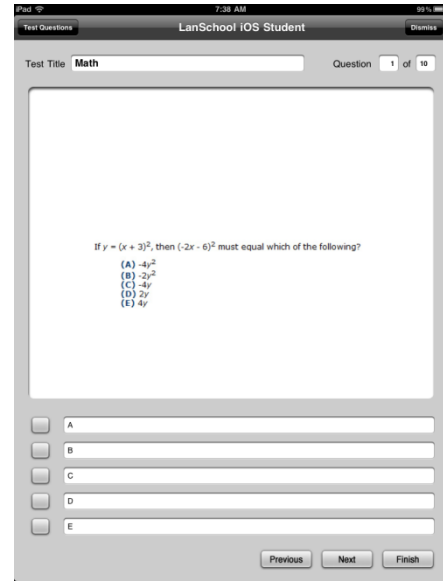
- The different options for LanSchool can now be set in the install wizard or centrally deployed through MSI packages and ADM files





- Security monitoring tool logs all LanSchool traffic.
- Filters can be set on types of security messages and machines to easily locate inappropriate use.





### Send Test To Students

**Test Information**

Path to the test file:

**Answers**

Login Name	Machine Name	Status	Score	1	2	3	4	5	6	7	8	9	10
LanSchool	LSFIDDLE	Working on test	0%	?	?	?	?	?	?	?	?	?	?
LanSchool iPad	f49b1d9e0a9fc...	Working on test	0%	?	?	?	?	?	?	?	?	?	?
Student 2	Computer 2	Working on test	0%	?	?	?	?	?	?	?	?	?	?
Test Results (averages):			0%										

Show Question Results

Teacher Edit Demonstrate Monitor Restrict Administer View Help (0:21) Mon 2:36 PM

LanSchool Teacher Console

Show Show Student Vote Testing Run Control View All Snapshot Message Blank Screen Limit Apps Limit Web Limit Print Limit Drives Mute Show Video Files Shutdown

The screenshot displays the LanSchool Teacher Console interface. At the top, there is a menu bar with options: Teacher, Edit, Demonstrate, Monitor, Restrict, Administer, View, and Help. On the right side of the menu bar, system status icons for network, Bluetooth, Wi-Fi, and audio are visible, along with a clock showing 0:21 and the date Mon 2:36 PM. Below the menu bar is a toolbar with various control icons: Show, Show Student, Vote, Testing, Run, Control, View All, Snapshot, Message, Blank Screen, Limit Apps, Limit Web, Limit Print, Limit Drives, Mute, Show Video, Files, and Shutdown. The main area of the console is a grid of thumbnails representing different student devices. The thumbnails are arranged in two rows. The first row contains three thumbnails: a Mac desktop with the LanSchool logo, a computer desktop with a yellow tulip wallpaper, and a computer desktop with a red sand dune wallpaper. The second row contains three thumbnails: a Windows desktop with a green hill wallpaper, an iPhone displaying a blackboard with the word 'Student' written on it, and an iPad displaying a blackboard with the word 'Student' written on it. At the bottom of the console, there is a status bar that reads 'Total Students: 6 Selected Students: 1' and a small circular icon.

bencahoon (Mac Test)

Student 1 (Computer 1)

Student 3 (Computer 3)

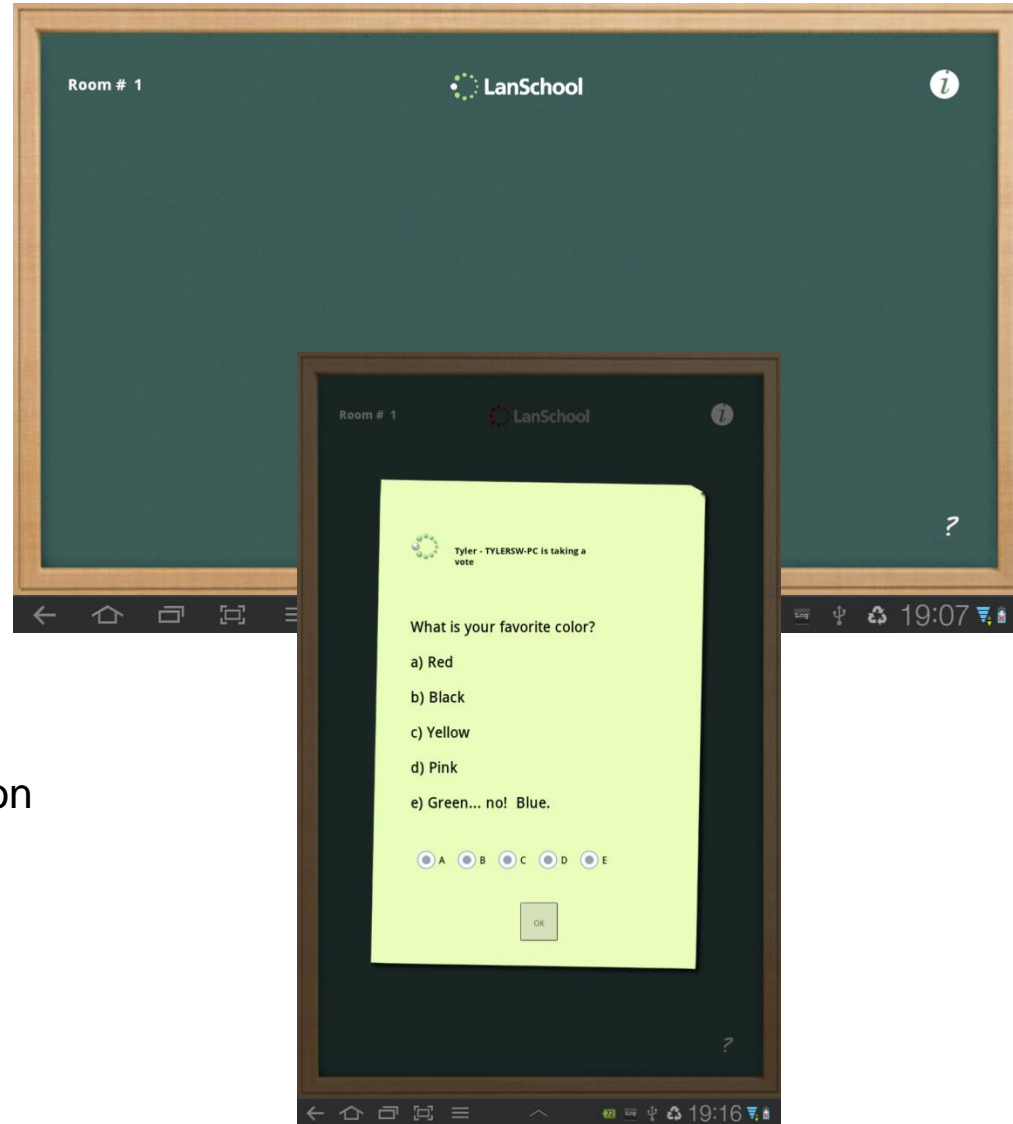
dddogget (WINXPSP2-CDR)

Ben's iPhone

iPad (4220d0d1ce823b8bd115711d22b49511a8281f8c)

Total Students: 6 Selected Students: 1

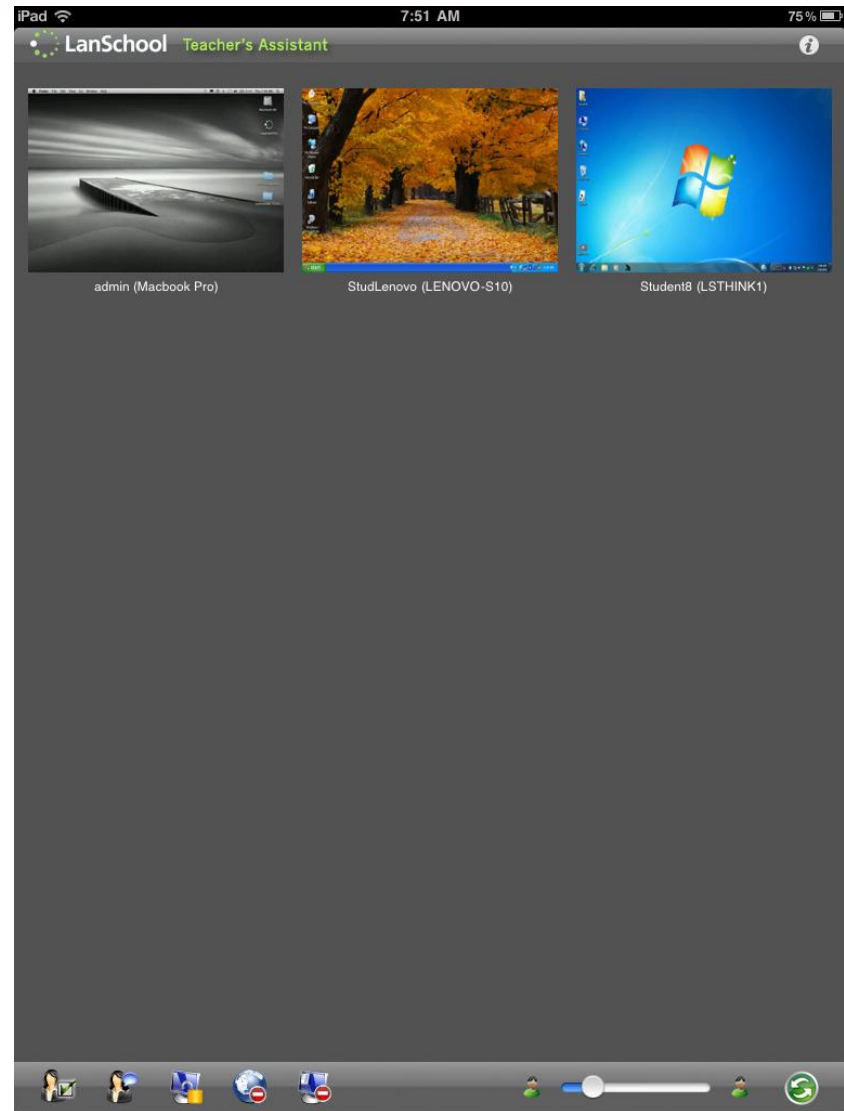
- Free app for Android 2.3, 3, 3.1, 3.2 and 4
- Thumbnails
- Receive “show teacher”
- Receive message
- Testing
- Send question
- Voting
- Gather Inventory information
  - Battery Status
  - Current application running & Icon
  - Network information
- Manually Change Channel



- Free app on iOS 3, 4, and 5.
- Pairs with a PC or Mac teacher's console
- Send message
- Vote
- Blank screens
- Limit web
- Limit apps

## New Features in 7.7

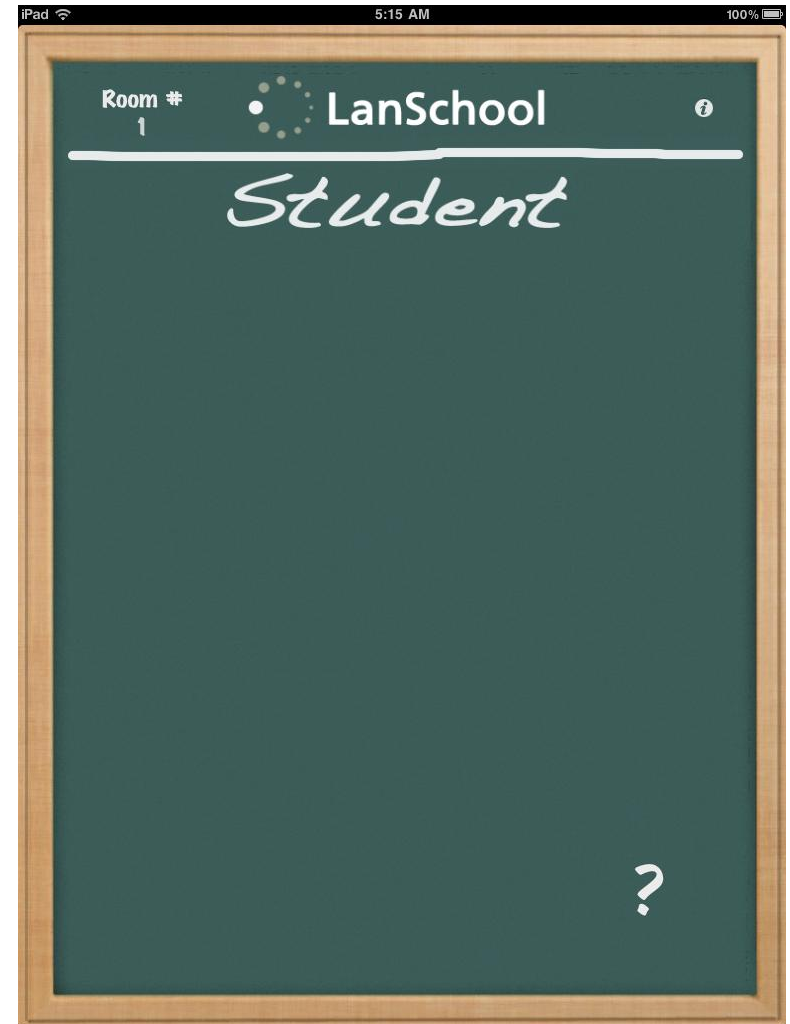
- Remote control Teacher computer
- Remote Control students



- Free app for iOS 3, 4, and 5
- Students select a teacher
- Send question
- Voting
- Testing on iPad
- Battery
- Receive message
- Chat
- Thumbnail


## New Features in 7.7

- Receive “Show Teacher”
- Receive “Show Student”
- Receive “Draw on Screen”
- iOS LanSchool web browser
  - Limit web
  - Website tracking history



- Free SDK for educational app developers
- 1 day to integrate
- Allows teachers to...
  - See a thumbnail of the app
  - See battery status
  - Send a message, chat
  - Send a vote
  - See progress and %'d complete



 LanSchool
LanSchool v7.5   LanSchool Lite   Purchase > Support   Updates

---

[Options](#)   [FAQ](#)   [Tutorials](#)   [EdApp Certification](#)

## EdApp Certification

The Apple iPad, iPod and iPhone devices provide an incredible platform for delivery of educational content to students worldwide. Thousands of app developers all over the world are providing new, exciting and innovative content, games, videos and educational apps.

At LanSchool we are passionate about educating the upcoming generations and want to help parents, teachers and professors adopt these new platforms. A critical element to that adoption is classroom management functionality. However, without the ability to run multiple applications at the same time, the ability to perform traditional classroom management is limited.

The purpose of the EdApp Certification is to provide teachers and professors the ability to monitor, manage and interact with students using iPads, iPods and iPhones. If an application is EdApp Certified it means that LanSchool has verified that the app has implemented some basic classroom management features. These features are accessible to the teacher from either the LanSchool Lite console (free to educators) or the LanSchool v7.5 paid version.

### Managing iPads, iPods, iPhones with EdApps Whitepaper

Features available from the free LanSchool Lite console:

**Discover and monitor student devices**  
Once an EdApp application is launched, the student's device will be discovered and displayed as a thumbnail or a device in list view of the console.

**View the current app and last visited URL**  
Teachers will be able to see which EdApp certified app is running. If all of the students are supposed to be in an Algebra app and practicing math, the teacher will know. The teacher will also see the last website the student visited.

**Monitor student progress through an app or see a final score**  
As students progress through an app's exercises or quizzes that information is sent back and displayed to the teacher.


**Student request for help**  
Students can silently Request Help from the teacher. A small question mark appears on the thumbnail with the student question, which indicates they need help.

**Monitor battery status**  
The charged state of the device's battery is sent and displayed in the teacher's console. A warning indication is made when the device is below 50% and a critical indication when the device is below 20%.

Additional features available with LanSchool v7.5 (paid version):


**Assess student understanding**  
Students can be quickly polled during a lecture with true/false or multiple choice questions.


**Send student messages**  
Teachers can send students messages to answer questions or get them back on task.





If you are an app developer and would like to download the EdApp SDK, please contact [Jerry Russell](#).


List of approved EdApps


SimpleMath.com


MathBoard


MathBoard Addition


SpellBoard


SpellBoard Buddy

iPad
5:27 AM
100%

## Results

Welcome to  
MathBoard

Version 1.5.1  
by PalaSoftware

< Play >

History
Settings

OPERATOR TYPES  
( + )

PROBLEMS  
(25, Vertical, Multiple Choice)

NUMBER RANGE  
(1-20)

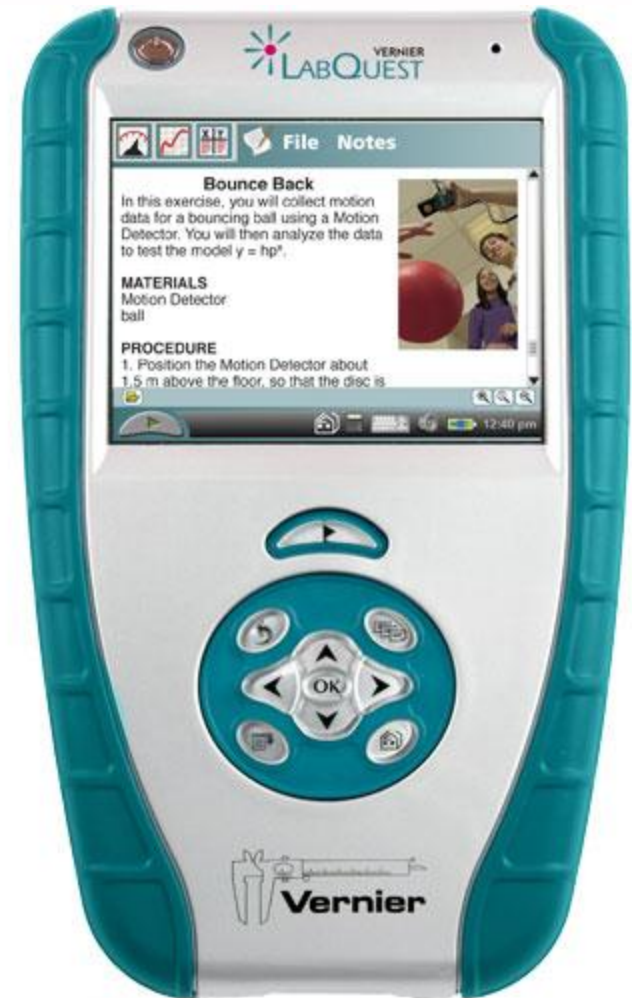
DIGIT LIMIT  
Off

TIME  
(Elapsed)

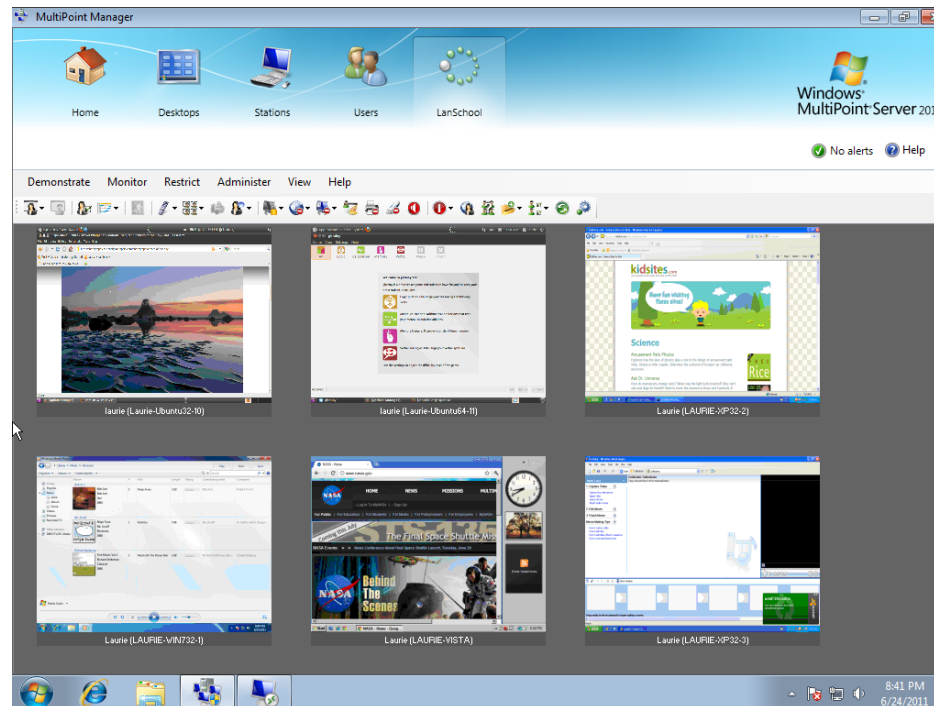
EXTRAS



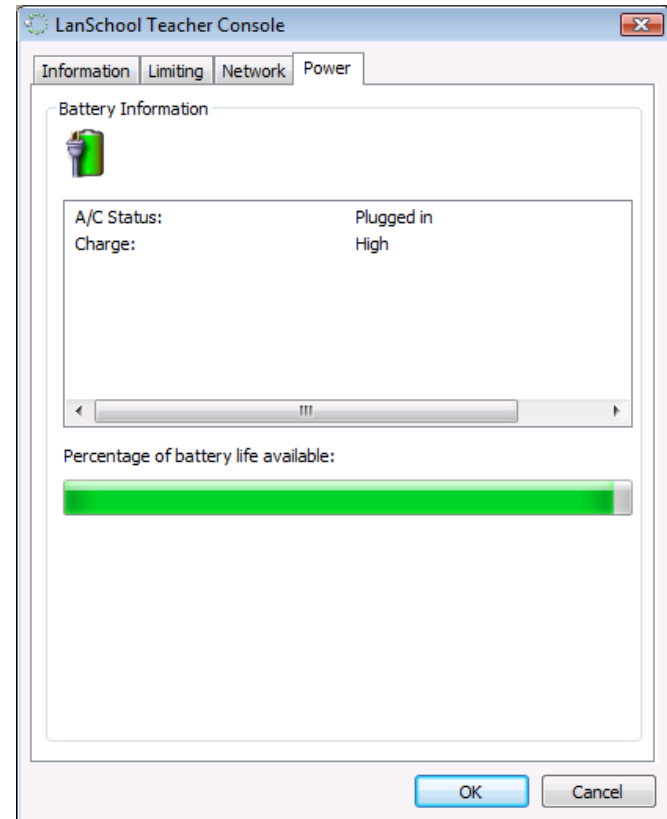
- View thumbnails of the Vernier LabQuest device
- Show the teacher's
- Show student's screen
- Blank screens
- ScreenFeed
- Chat
- Send Message
- Ask a question
- Random selection by teacher
- Send/collect files
- Snapshot
- Battery monitoring
- Voting
- Change student channel
- Update student software



- Supports MultiPoint Server 2011
- Snaps into the WMS 2011 console
- Compatible with all LanSchool students
- Classroom layout and Become a student are not available



- Supports schools that have one laptop or tablet per student
- Two methods are supported
  - Teachers load pre-configured class lists
  - Students can join a class
- Teachers can create, save, modify and compare class lists based on machine name, login name or Active Directory display name
- Notebook battery monitoring notifies the teacher if the batteries get to a warning or critical state



- Stoneware Acquired LanSchool!
- We joined forces to help schools teach more effectively in BYOD, 1:1 and traditional lab environments
  - Just-in-time monitoring and management
  - Hybrid model will ease the transition from the client to the cloud
  - Accelerate mobile development



**stoneware, inc.**

- Desktop Management
  - Inventory
  - Technology utilization (web and applications)
  - Remote control
  - Software distribution
  - View/set security profiles
  - Power profiles
  - Support requests
  - LanSchool student and teacher updates
  - Windows SteadyState™ control
  - Emergency messaging
- Now Included!

- LanSchool is...
  - Simpler to install, use and maintain
  - Built on a reliable architecture
  - Supports multiple operating systems
  - More efficient using network and computing resources
  - Security hardened to prevent disruptions by students
  - Better supported
  - Best value on the market
  - The only solution to work well in a BYOD environment